

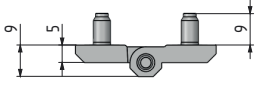
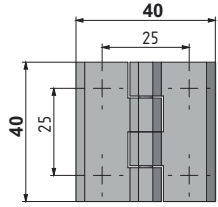
# FLAT HINGES

## LEAF HINGE

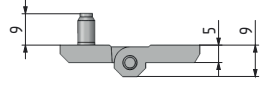
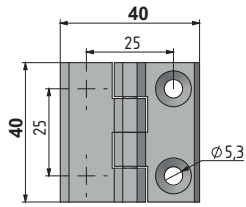
299



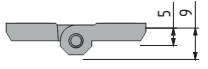
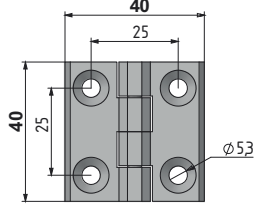
V:1



V:2



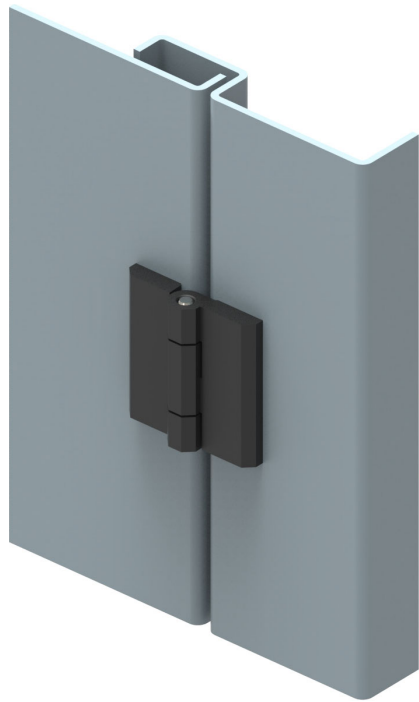
V:3



- Stainless steel version: page 500
- Generally used for plain/flush mounted doors
- Stud versions fitted with M5 x 8.5 mm threaded stud
- Stainless steel (AISI 304) hinge pin.

**MATERIAL**

BODY: Zamak DIN-EN 1774-ZnAl4Cu1  
 PIN: Stainless Steel



MATERIAL	M	FINISH	F
Zamak	1	Chrome plated	1
		Black coated	2
Plastic	2	No finish	0

Group Code	Material	Finish	Version
299	M	F	V